



# Care-tographies, ethics and the digital

Sam Hind, CIM | ICT4D RHUL

the rallying cry of the revanchist city might well be: "who lost the city? And on whom is revenge to be exacted?" - Smith (1996: 222) as quoted in Tom Slater (2009 - The Revanchist City)

Late 19c = bourgeois revanchists  
Late 20c = neoliberal revanchists  
2016/17 = authoritarian revanchists

Revanchism

Accounts of (a) urban life (Graham)  
(b) security practices (Amoore)  
(c) migration (Jones)

Digital is 'tooled' to perform punitive practices  
Now more fully 'weaponized'

'Weaponizing' the digital

‘Push-back’ against digital revanchism  
Expression of another possibility  
Interface design and objects (Ash)  
[Darkpatterns.org](http://Darkpatterns.org)





Care-tographies

"broad, connective relations between care-givers and receivers through which the form, direction and quality of attention, responsibility, competence and responsiveness can be gauged, selected and enacted."

As an 'ethically and politically charged practice' (Puig de la Bellacasa 2001:90)  
Ontological security as qualitative 'measure' of care-tography  
Undesirable effects: anxiety, vulnerability, exposure

## Voting

Voting is now closed. 5 users voted "yes", 9 user voted "no". Proposal has not reached the minimum amount of 15 votes or 8 approving votes. **The proposal is rejected.**

-  I **approve** this proposal. --Flaimo 00:09, 8 May 2011 (BST)
-  I **approve** this proposal. --Dri60 09:46, 8 May 2011 (BST)
-  I **approve** this proposal. --Burnus 11:54, 8 May 2011 (BST)
-  I **approve** this proposal. --Al3xius 18:22, 9 May 2011 (BST)
-  I **oppose** this proposal. I now vote no because i wasn't aware of the overlap between this proposal and `amenity=kindergarten` --Computerfreaked 10:43, 20 May 2011 (BST)
-  I **approve** this proposal. --Kerosin 23:04, 12 May 2011 (BST)
-  I **oppose** this proposal. `amenity=childcare` is overlapping with `amenity=kindergarten` and it is not stated, how this issues should be handled. --Fabi2 16:32, 13 May 2011 (BST)
-  I **oppose** this proposal. for the same reason explained above. I understand this proposal as the same thing as `amenity=kindergarten` with sometimes different opening hours, there's no need to use another tag for that. --Don-vip 02:32, 14 May 2011 (BST)  
so 10 year old children go to kindergartens after elementary school in france? --Flaimo 10:15, 14 May 2011 (BST)
-  I **oppose** this proposal. `amenity=childcare` is overlapping with `amenity=kindergarten` and it is not stated, how this issues should be handled. --User 5359 19:00, 15 May 2011 (BST)
-  I **oppose** this proposal. don't use *amenity* for everything. I would prefer `social_facility=childcare` if you want an alternate to `amenity=kindergarten`. --josias 06:15, 16 May 2011 (BST)
-  I **oppose** this proposal. `amenity=childcare` and `amenity=kindergarten` are overlapping. --pmurk65 11:00, 16 May 2011 (BST)
-  I **oppose** this proposal. As already stated in the comments: age is highly ambiguous and will normally be referred to the feature and not to the people for which the feature is intended. (have a look here: [1] ). I also don't agree with your interpretation of "opening\_hours". I don't care whether this is "amenity" or "social\_facility". --Dieterdreist 11:55, 16 May 2011 (BST)
-  I **oppose** this proposal. We already have `amenity=kindergarten`, what is that new tag useful for? --Iknopf 13:25, 16 May 2011 (BST)
-  I **oppose** this proposal. The existing `amenity=kindergarten` is good enough. --R-michael 17:52, 16 May 2011 (BST)

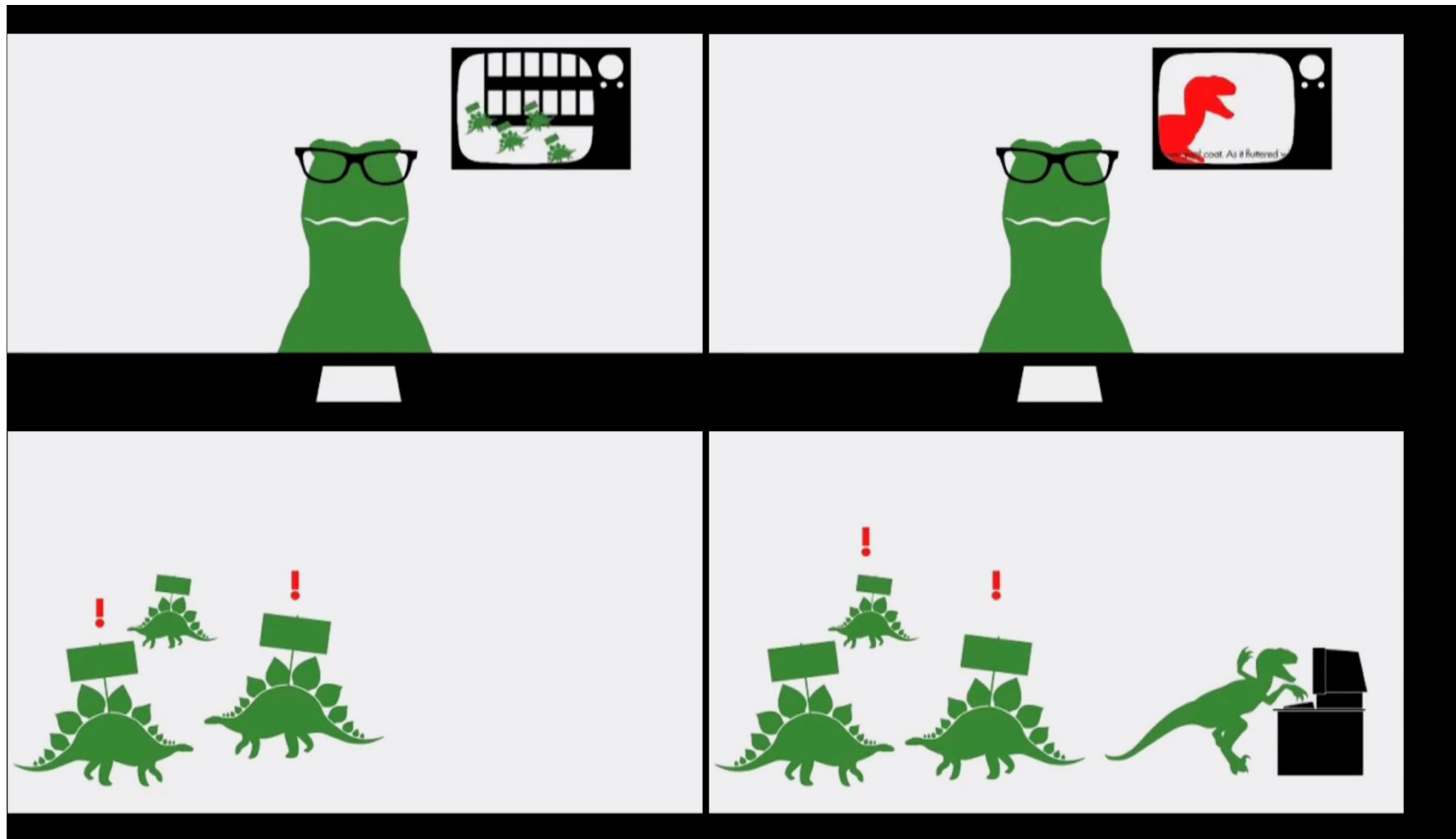
As a representational concern (placing spaces of care 'on the map')  
Shift to digitally-mediated practices  
Need for new protocols  
'Building' care 'into' networked processes

Representation to Practice

The brainchild of a group of young, recently politicised computer programmers, Sukey's main goal is to stop people getting kettled. On the day of a protest, founders collate information from individual protesters - tweets, texts and GPS positions - about what is happening on the ground. The Sukey team then update an online live-map of the protest, accessible from smartphones. Simultaneously, they tweet and text brief summaries of events to all their subscribers, telling them where other protesters are situated, and - most significantly - where kettles are forming. As the nursery rhyme (from which Sukey takes its name) aptly suggests: "Polly put the kettle on, Sukey take it off again."



(Failed?) Test 1: Sukey



(Failed?) Test 1: Sukey



LOG IN

# I SEA

An app that crowd-sources the search of the sea for migrants by giving access to the satellite image of the sea to smart phone users.

WATCH FILM ►

SHARE

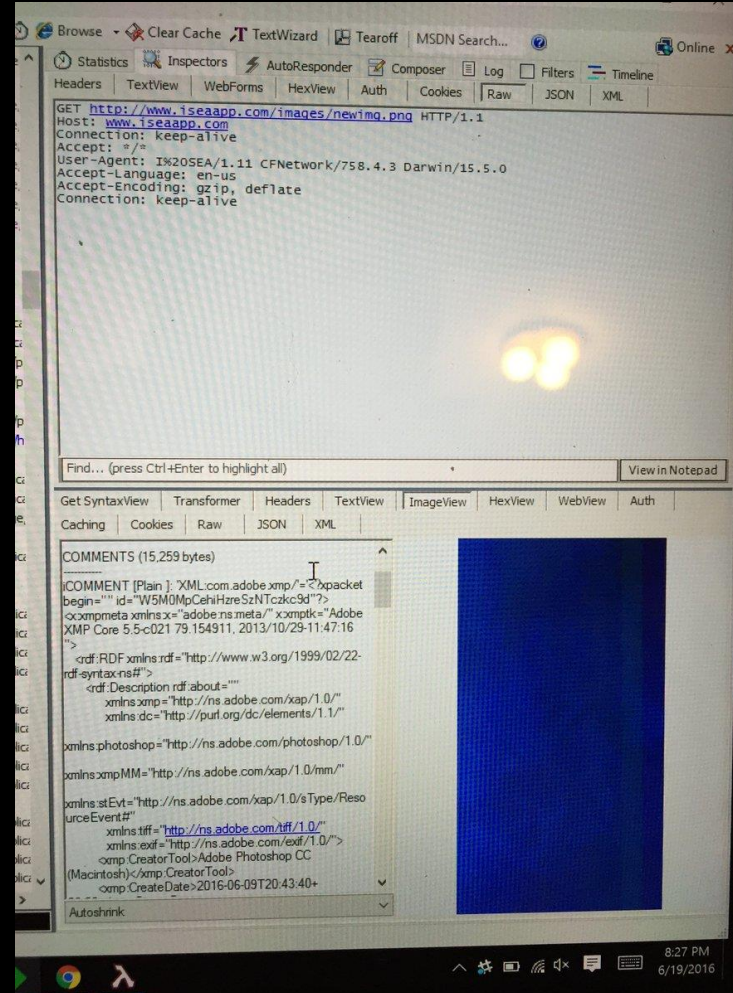
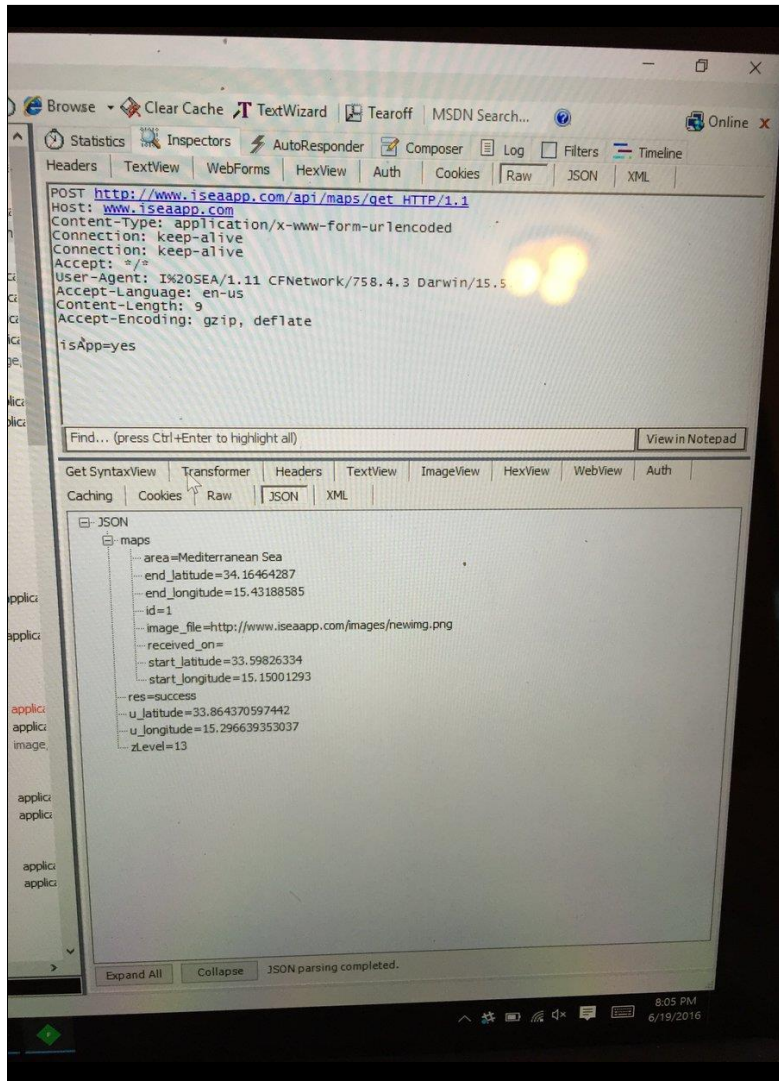


## DOWNLOAD



An app that crowd-sources the search of the sea for migrants by giving access to the satellite image of the sea to smart phone users.





Abandoned Test 2: I Sea



## The maps were wrong

"It was clear they used Google Maps," Keller said. "It would have been wrong because Google Maps doesn't update satellite imagery very often. Maybe once every 18 months."

Keller did further detective work to pin down when exactly the Google Maps imagery had been taken. Google Maps doesn't supply this information, but its heftier brother Google Earth does. The two services are powered by the same satellite imagery, but Google Earth offers users more detail.

Since Keller knew the GPS co-ordinates of the area he was viewing on the app, he typed these into Google Earth to determine when the latest images had been taken.

"It turns out Google has absolutely zero satellite imagery for that region," said Keller. "Google only has topographic maps of the Mediterranean Sea. So even if it wanted to, Grey was unable to use images from Google Maps in I Sea."

In short, Google's never taken satellite imagery of the area Grey for Good claimed to be investigating.



## The weather was wrong (and irrelevant)

Another "red flag" to Keller was the fact that I Sea gave the weather for the region. Why was this necessary, and where was the data coming from?

Keller ran a programme that told him the I Sea weather data for the Mediterranean Sea was coming from Weather Underground.

"If you view the URL (it's plain text), you can see it's the weather for Misurata, Libya. Misurata is quite far from the location in the Mediterranean Sea – it just happens to be the closest location with a weather station to the correct location."

Emergent 'exposures' and 'vulnerabilities' inadequately dealt with  
Capture mechanisms turning everyday activities into archival (re)sources - 'field of vulnerability' (Veel)  
Affecting (a) attention paid and (b) competence of care work

New 'design patterns'

New 'user profiles'

New 'user journeys'

Patterning as 'await[ing] subjectivation' (Dieter 2016: 170)

In effect, bringing into being new care relations

Task